

Life 20

December 2002

No. 324

# The American Peony Society Bulletin



100<sup>th</sup>  
Anniversary



Commemorative Issue

*Announcing*

The limited  
publication of  
a "TABLE TOP"  
edition devoted  
exclusively to

**AMERICAN**

**TREE  
PEONIES**



## 63 BRILLIANT FULL COLOR PHOTOS

True, tree peonies with their 1400 year history are not native to America. But a class of exceptional HYBRID tree peonies are. Efforts by seven world renowned American hybridizers\* who successfully cross-pollinated *P. Lutea* with *P. Suffructicosa* are covered in this limited edition. Photos are razor sharp in detail and reflect all the brilliance and subtle hues of these native Americans, including the new generation of ITOH's.

*Appended cultural notes cover:*

- *Tree Peony history*
- *Planting and general culture*
- *Propagation by root grafting of scions*
- *Pruning, fertilization, winter protection, etc.*

Compiled and edited by  
Greta M. Kessenich;  
photos by Roy Klehm  
and David Reath

\* *A.P. Saunders, William Gratwick, Nassos Daphnis,  
David Reath, Toichi Domoto,  
Don Hollingsworth and Roger Anderson*

**\$25 Postpaid**

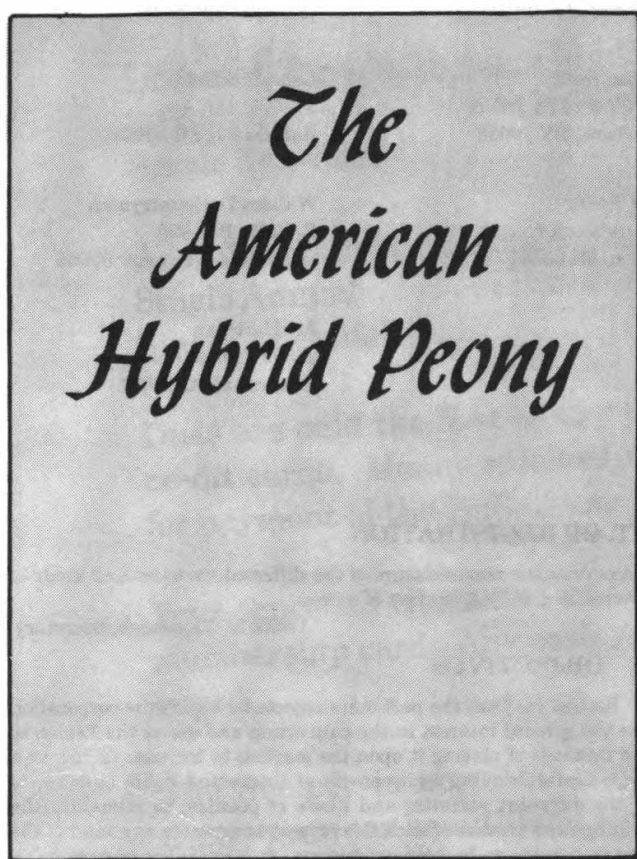
*Send check or money order to—*

**AMERICAN PEONY SOCIETY**  
250 Interlachen Road, Hopkins, MN 55343



**A VALUABLE PEONY  
REFERENCE VOLUME HIGHLIGHTING**

# **HYBRID PEONIES**



## **Herbaceous Peonies in FULL COLOR!**

- **Photos—  
130 Herbaceous  
Hybrids  
32 Species**
- **All Named**
- **Biographical Data**
- **208 Pages**
- **6 5/8" x 9 1/4"**
- **Hard Cover —  
Embossed in Gold**

*Devised and  
Compiled by  
Greta M. Kessenich,  
Don Hollingsworth  
Hybridizing and  
Bibliography*

Ever since contemporary hybridizers unraveled the mysteries of cross pollinating peony species, hybrid crosses have received spellbound attention. This long-awaited effort adds to the excitement of growing peonies. Photos permit comparing your hybrids with those authenticated by the hybrid committee plus scores of sideline notes and general information. Be one of the first **\$25.00** to own this premiere edition, just ..... Postpaid

**Send check or money order to—**

**AMERICAN PEONY SOCIETY**  
250 Interlachen Road, Hopkins, MN 55343

## AMERICAN PEONY SOCIETY

250 Interlachen Road (612) 938-4706 Hopkins, MN 55343

President.....Steve Johnson

Secretary-Treasurer.....Greta M. Kessenich

Vice President.....Peter Waltz

Bulletin Editor.....Greta M. Kessenich

### BOARD OF DIRECTORS

#### Terms Expiring 2004

Don Hollingsworth  
28747-290th St.  
Maryville, MO 64468

Kit Klehm  
Song Sparrow Farm  
13101 East Rye Road  
Avalon, WI 53505

Roy Klehm  
Klehm Nursery  
195 S. Penny Road  
Barrington, IL 60010

Irvin Ewing  
25039 Doris Court  
Redford, MI 48239

Steven Johnson  
5845 Howards Point Road  
Shorewood, MN 55331

Dr. Kent Crossley  
1245 Delaware Ave.  
St. Paul, MN 55118

Joseph Glocka, Emeritus  
12120 W. Oklahoma Ave.  
West Allis, WI 53227

#### Terms Expiring 2003

Greta M. Kessenich  
250 Interlachen Road  
Hopkins, MN 55343

John Elsley  
520 Bryte St.  
Greenwood, SC 26949

Dale Baum  
314 Coventry Drive  
Anderson, IN 46012

Vernon Kidd  
500 W. 43rd St. PH-A  
New York, NY 10036

Scott Reath  
Reaths Nursery  
Vulcan, MI 49892

#### Terms Expiring 2002

Tim J. Stanek  
23329 Ellington Avenue  
Glenwood, IA 51537

Peter Waltz  
84 Brentwood Road  
Exeter, NH 03833

Hans Hansen  
15605 Snake Trail  
Waseca, MN 56093

Leila Bradfield  
8110 W. ML Ave.  
Kalamazoo, MI 49009

William D. Countryman  
R. F. D. Box 990  
Northfield, Vermont 05663

Art Hartman  
22809 French Road  
Mattawan, MI 49071

### DEPT. OF REGISTRATION

The department was formed to properly supervise the nomenclature of the different varieties and kinds of peonies. All new varieties should be registered to avoid duplication of names.

Greta M. Kessenich, Secretary

### OBJECTIVES

The Articles of Incorporation state: Section (2) That the particular objects for which the corporation is to be formed are as follows: To increase the general interest in the cultivation and use of the Peony; to improve the methods of its cultivation and methods of placing it upon the market; to increase its use as a decorative flower; to bring more thorough understanding between those interested in its culture; to properly supervise the nomenclature of the different varieties and kinds of peonies; to stimulate the growing and introduction of improved seedlings and crosses of such flower; and to promote any kind of the general objects herein specified by holding or causing to be held exhibitions, and awarding or causing or procuring to be awarded, prizes therefor or in any other manner.

The AMERICAN PEONY SOCIETY BULLETIN is the official Society publication. It is mailed postpaid quarterly to all members in good standing.

### MEMBERSHIP

The By-Laws state: All reputable persons, professional or amateur, who are interested in the Peony; its propagation, culture, sale and development are eligible for membership. Dues are as follows:

Single Annual .....	\$10.00	Family Triennial .....	35.00
Single Triennial .....	25.00	Life Membership .....	300.00
Family Annual .....	15.00	Commercial membership .....	25.00

Family membership, any two related members in same household .....One Bulletin

For those who wish to further support the Society, the following special memberships are available.

Contributing .....	\$25.00	Supporting .....	\$100.00
Sustaining .....	50.00	Patron .....	250.00





# the American Peony Society Bulletin

---

December 2002 — No. 324

---

## TABLE OF CONTENTS

The American Hybrid Peony .....	1
Officers and Directors .....	2
Table of Contents .....	3
President's Message .....	4
PHOTOS .....	5-27
Letters.....	27-30
Registrations .....	30-41
Advertising .....	38-48

*From the 1927 catalogue of Rosefield Peony Gardens, Des Moines, Iowa. Written by C. A. Harrison, author of several manuals on the peony and a charter member of the Society. He was also instrumental in promoting large plantings of peonies in its trek westward.*

Plant the peony, the rose, the tulip and the columbine and care for them, and lo, the silent partner comes without noise or heraldry, and the blessed work goes on. Soon a thrill comes to you. You feel the honor of it, the glory of it—this partnership with Him who plants the splendors of the suns.

One flower cannot represent the whole race; one variety cannot do justice to the whole species. We are God's millionaires and don't know it. Wealth is not confined to glittering gold. It comes in a thousand forms far more attractive than cold, indifferent metal.

We pass this way but once. Let us beautify the path as we go, so that the world may see which way we went.

*If you cut a tree, plant a tree.  
It is nature's replaceable energy.*

## President's Message

### A Heartfelt "Thank You"

On behalf of the American Peony Society, and as your standing President, I wish to thank all those members who have given generously during our 100 year history of success. The Society and our mission, have grown considerably due to the efforts and generosity of our members. These efforts and results have no doubt surpassed the expectations our founders had at the first formal meetings held in 1903. Our enthusiasm for peonies knows no borders, nor seemingly any limits.

This December 2002 100th edition of the APS Bulletin is a tribute and a heartfelt *"thank you"* to some of the many who have contributed to the success of the Society over the last 100 years. It is my hope that you will enjoy this Centennial issue and take a moment to reflect on our proud history. During this holiday season, on the eve of our hundredth Anniversary, do enjoy a toast to our proud history, our present state, and also one to our bright future.

***Thank you, one and all!***

Cheers,

Steve Johnson, President  
American Peony Society



## America Peony Society Convention

Minnesota Landscape Arboretum,  
Chanhassen, Minnesota

June 13, 14, 15, 2003

*Note: The first Annual Meeting of the Society was held in 1903.  
(See Bulletin #322, pg. 16-17.)*

# American Peony Society

*Members past and present...*



**Glory Hallelujah**  
The American Peony Society  
is 100 years old.

(Carl H. Klehm, 1963)



*Back Row:* John Simkins (1974), Roy Klehm (1972),  
Frank Moots (1949), Lou Smirnow (1962), Frank Howell (1964)

*Front Row:* Gus Sindt (1970), Silvia Saunders (1968),  
Marvin Karrells (1947), and Clarence Lienau (1960)

*Past Presidents—pictured in 1974, Royal Botannical Gardens, Canada*

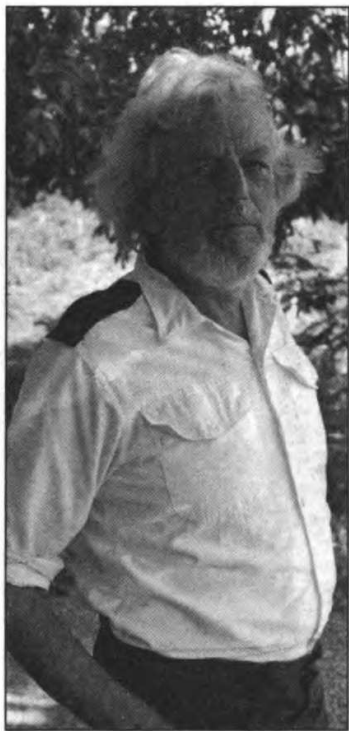




**William Gratwick and his greenhouse  
about 1940**



**Nassos Daphnis office Pavilion, NY  
Bill Gratwick, 1962**



**William Gratwick**



**Nassos Daphnis**



**Professor Saunders in 1953  
working on his card file in his nursery**

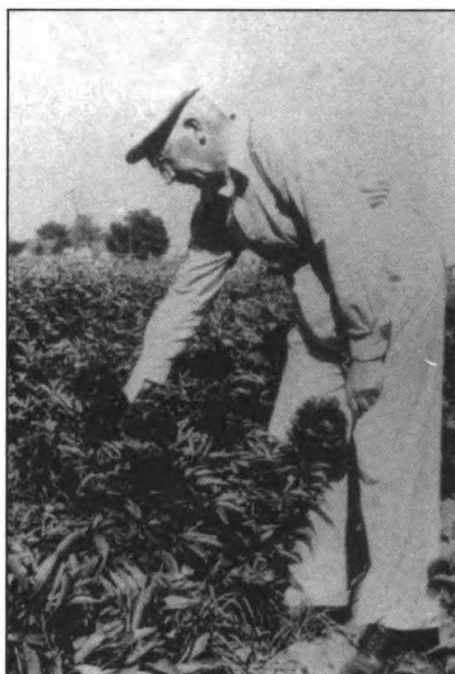


**Nassos Daphnis and Lee Gratwick, 1993**

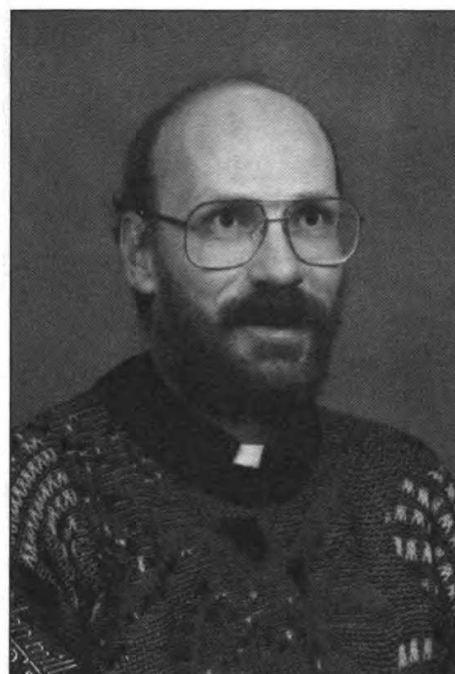


**Orville Fay, hybridizer**





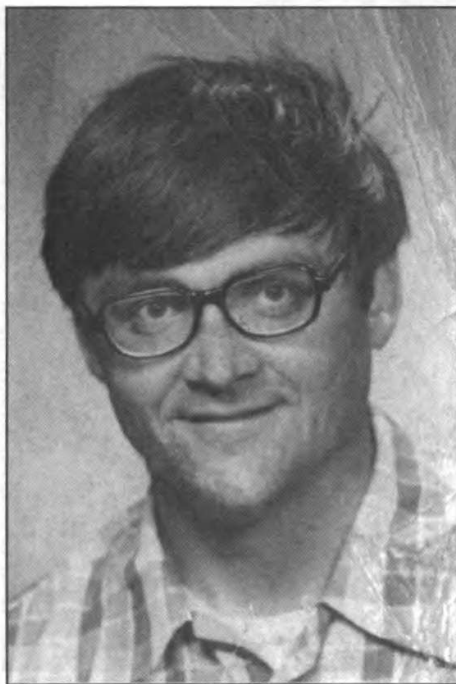
**Robert Auten, 1940**  
**Hybridizer**



**Jack Nordick**  
**Peony grower and prolific**  
**writer and contributor**  
**to the Bulletin**

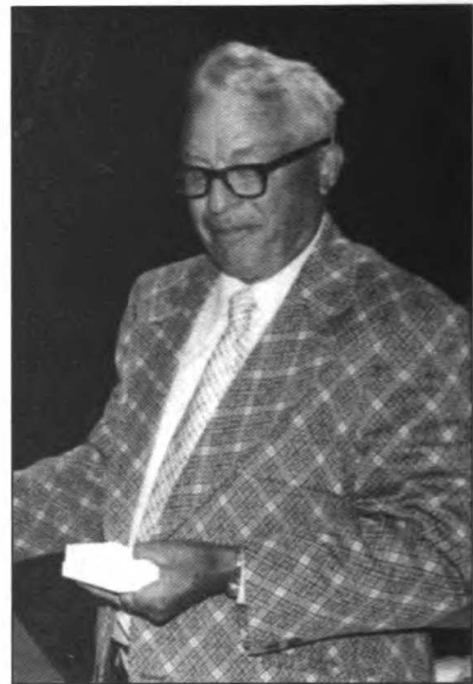


**Bill Krekler, hybridizer, and Frank Moots, hybridizer and cut**  
**flowers, at the Banquet**



**Dr. Carl Klehm**

One of the greatest exhibitors of peonies. He brought 6,000 to Minneapolis/St. Paul show with his staff to help set them up. His mother Lois Klehm brought 2 car loads of potted peonies for the auction.



**Clarence Lienau**

Received many awards for his displays of peonies.



**Gus Sindt**

Perennial exhibitor and overseer of all exhibits on the show table as to correctly placed and displayed. Life appointment for judging seedlings.



**Edward Lee Michael**

Introduced the seed program, Laning was then named the chairman of it.



**Gary Seaman, Dr. David Reath, and Carl Klehm**



**Lois and Carl Klehm, 1962**





**LeRoy Pehrson**  
Hybridizer and Chairman of panel of hybridizers.



**Irvin Ewing**  
*"Years of Generous Contributions"*  
Awarded the Bertland H. Farr Medal. "Words are inadequate to express the service rendered by Mr. Ewing. Over many years, he gave freely of his time, his talent and work in supplying the American Peony Society with all printed material. His gifts came at a time when the Society was at a low financially and through his generosity, business was carried on with mailing and office supplies in abundance. He has worked with peonies for years, and is a professional in helping with exhibitions, in every capacity.



**Greta Kessenich**  
Dedicated 32 years of service to the American Peony Society as Secretary-Treasurer and Editor



**Sylvia Saunders**  
Daughter of Prof. Saunders, at his death she took over and operated the nursery. She later sold the nursery. Active within the Society.



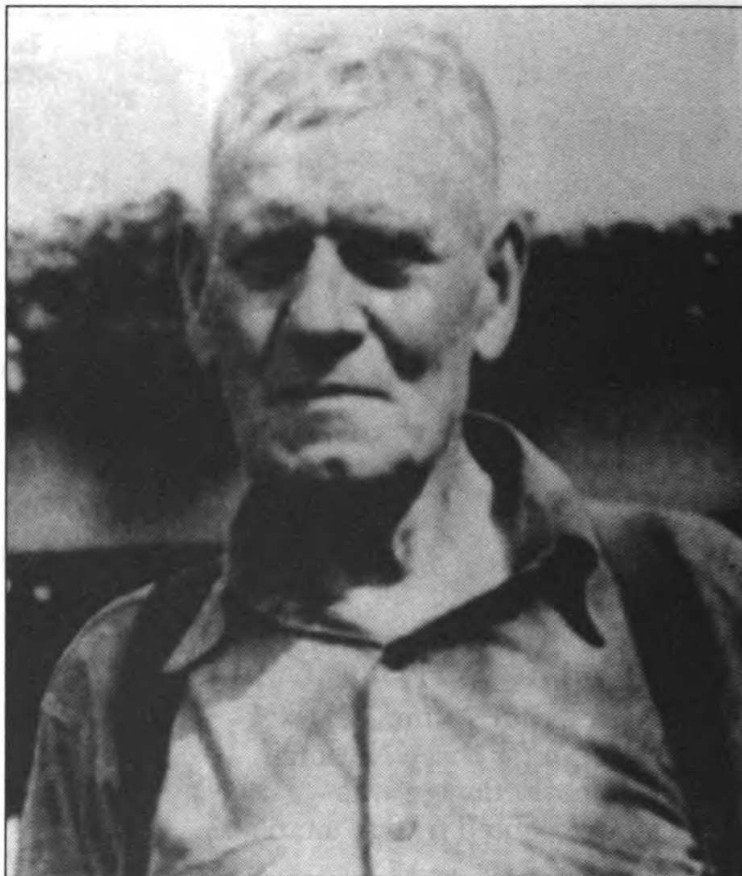
**Joe Glocka and Vi Simkins**  
Contributing member at our Annual Show.  
Joe was Show Chairman for three National Shows. Our Bulletin cover design was presented by Joe and accepted by our members.



**John Simkins**



**Mrs. Falk with her son Earl**  
*(Daughter of Glasscock)*



Glasscock, Hybrid Peonies



Marvin Karrells and Joe Glocka judging



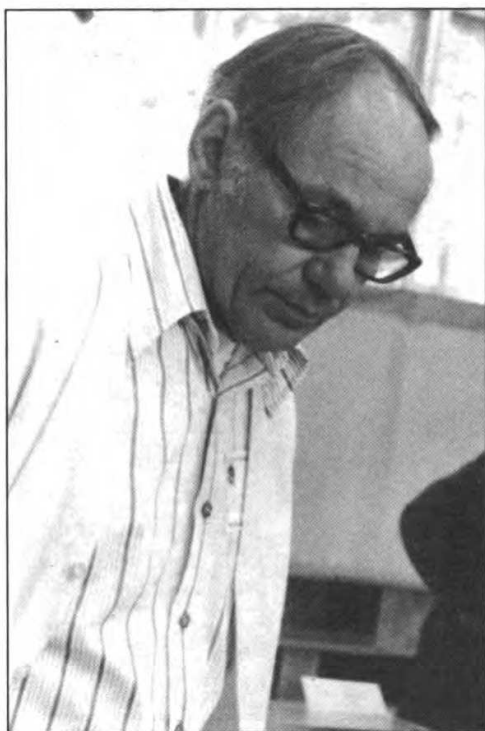


### **Board Members 2000**

*Back Row:* Floyd Kimball, Bill Seidl,

Kent Crossley, Scott Reath, and Joseph Glocka

*Front Row:* Tim Stanek, R. Kennard Baker, and Steven Johnson



**Chris Laning**

**Lois Laning**

Hybridizer and Editor of hybridizers newsletter  
"Paeonia" for 20 years. Lois Assisted.



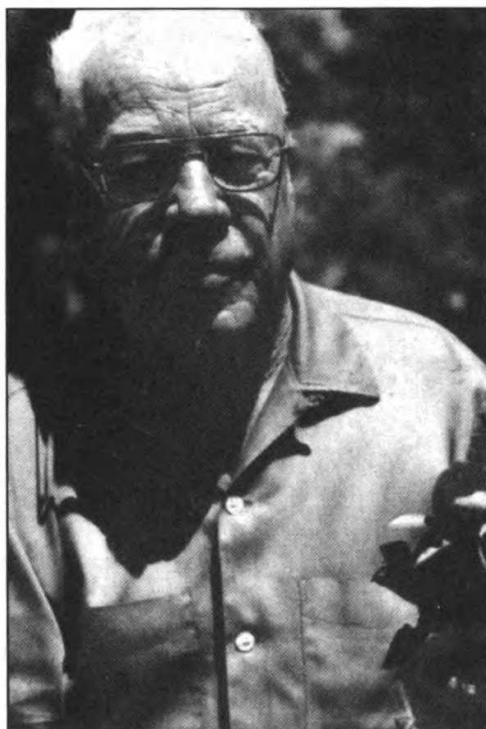
**Clarence Lienau and Walter Alexander  
1972**



**Arthur Murawski  
Hybridizer—Moonstone, etc.**



**Nathan Rudolph  
Hybridizer—America**



**Alan Wild**  
Peony Great  
Gilbert H. Wild & Son Nursery  
Missouri



**Sam Wissing**  
Hybridizer—Coral Charm,  
Raspberry Charm, Coral Sunset  
and Coral Supreme



**Mr. Frank Moots**  
Hybridizer & cut flowers business  
and Lou Smirnow  
Brought back from Japan the cross  
producing the yellow herbaceous peonies.



**Frank Howell**  
Director and President



**Charles Christian Klehm**



**Charles Christian Klehm (89 years)  
and Carl George Klehm (39 years)  
1955 photo of Father and son, 50 years difference.  
Carl is Roy Klehm's father.**





**R. W. (Bob) Tischler,  
Faribault, MN**

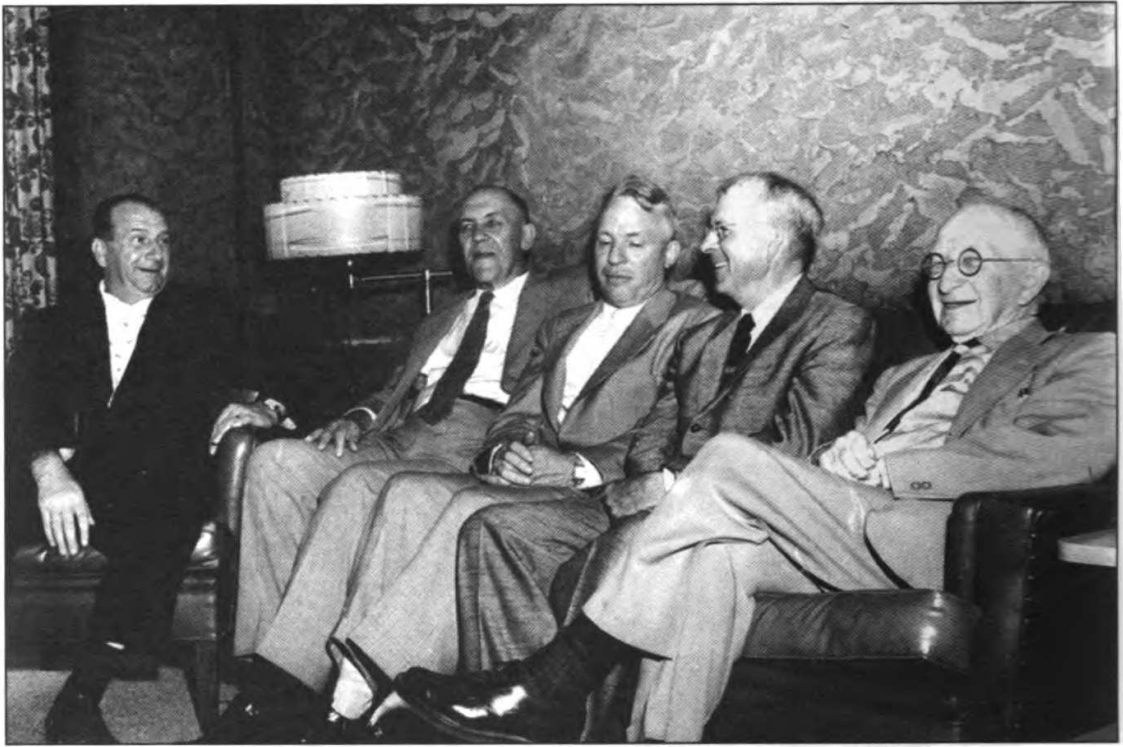
*"Former owner of  
the Brand Peony  
Farm He has sold  
the farm and now  
has a nursery  
which he operates  
by himself."*



**Dale Baum (Board member) with his sister, Becky**



**Alvin and Judy Sevald (with their children)  
Nursery man and former Board Member.**



Pharon Delinger, Walter Lindgren, Clarence Lienau,  
Myron Bigger, and George Peyton  
at the North Dakota Show in 1964



Charles and Emma Klehm  
Holding **Charlies White** about 1952



**Bulletin #320 — Marathon Boy with Vivid Rose**  
*Carl G. Klehm, Photo by Vernon Kidd, New York, NY*



**Bulletin #231 — The Winner! Kit Carl Klehm, Great Grandson of Charles Klehm (Charter Member, American Peony Society 1903). Kit is the Grand Champion winner of the 1979 National Peony Show held May 25th, 1979. The flower is the tree pony variety “Yachiyo Tsubaki” (Eternal Camellia).**



### **Bulletin #232 — Salute to Marvin Karrels!**

He wrote the "Guide for Exhibitions Judging" of the peony in detail. Both he and Gus Sindt, wrote the permanent show schedule. His first priority is the the nomenclature of the peony. Correct procedure must be followed. "We must have an accurate nomenclature." Mr. Karrels has always been an advocate of peony exhibitions. He is one of the pros in peony exhibiting, always entering peonies at the national shows.



### **Bulletin #233 — "Master Showman, Supreme Grower True Friend to All—Mr. Peony"**

Mr. Clarence Lienau, Detroit, MI, Commercial Grower of Fine Peonies

All through the years Mr. Lienau has been an ardent supporter of the Society, in gifts, peony roots, and contributions. He was instrumental in introducing the peony root auction, which has become a tradition and looked forward to as a pleasurable and profitable part of the program at the national meetings. He has been President of the American Peony Society, served on the Board of Directors for many years and continues on in this capacity. He excels in the exhibition of peonies, and is one of the Peony Greats of the Society.





Bill Seidl, brush in hand, pollinating shrub hybrid #199,  
a tall-growing seedling, garden-named "Peach Festival." June 2002.



## Letters

You have invited correspondence from the Society's membership, so I'm sending you some peony information from Alaska. I am a fortunate and happy recipient of the Society's free seed bank. Many of the plants I have were raised from seed sent to me several years ago by Chris Lanning of Michigan. I'm enclosing two photographs of blooms that emerged just this summer. These flowers were breathtaking to see.

Aside from their exquisite beauty, another reason they excited me is their resemblance to tree peony blooms. The Society Bulletin's many recent front and back cover photos of tree peonies have always caused me to sigh a bit because I've always wanted one, but they don't do well in Alaska. A major greenhouse in Anchorage managed to nurture one for several years outside, but a severe winter finally took it out. So when I saw these blooms (enclosed photos) appear this summer I was immediately struck by the fact that their conformation and aura were so much like tree peonies—perhaps the closest I'll ever get to experiencing "that look."

A couple of years ago I saw the China advertisement in the Bulletin, offering free tree peony seed. Despite poor luck with these plants this far north, I decided to send for the seed and give them a try. It's taken awhile, but I've managed to germinate and nurture eight plants that are around five inches tall now. They've survived three Alaskan winters thus far, and I'm hoping for continued luck.

I also have a truly spectacular peony purchased from Reath's Nursery in Michigan. From the very beginning, **Pillow Talk** erupted from the ground into numerous stems with incredible, multiple blooms up to eight inches across. It's beauty continues to take my breath away.

I also have **Festiva Maxima**, **Mons. Jules Elie**, **Paula Fay**, and **Early Scout** (the later purchased from master commercial grower Judy Wilmarth of Anchorage). In the ground, but seeming to have a struggle, are **Bowl of Beauty**, **Red Charm**, **Karl Rosenfeld** and a few others. But they are young and need peony patience.

Again, most of my plants are from the seed bank. My Chris Lansing plants vary from large white singles (extraordinarily hardy and prolific) to large pale pink singles with gracefully fluted petals. Also some smaller fuchsia-colored singles. I now make it an annual ritual to collect these seed pods in the fall, dry the seed, and label them as best as I can—then send them off to the Society's seed bank. I want to give back what I have received—that being immense pleasure in the gifts that the American Peony Society has made it possible for me to have. Thank you so much.

Sincerely,  
Roberta Sheldon, Talkeetna, Alaska

---

Perhaps more than any other time, the Seashore garden this summer has proved most revealing, with weather conditions in the U.S., indeed worldwide, in the record-breaking extremes. Drought and destructive forest fires have raged throughout the West, and floods through the Southeast, while in Europe, they have experienced the worst flooding in over 100 years.

Drought in Manhattan, Long Island and Fire Island, severe, beginning with last winter's mild temperatures and no snow cover along with little rain, was what particularly affected the Peonies. Both fewer and smaller blossoms resulted, and many have dropped their leaves as early as July.

Winter seemed to finally occur in March; then 96 degrees in the middle of April, making it the hottest April here in memory. Watering the Island garden twice daily during my weekends there has kept it alive, and I have noted digging down about 6 inches, the soil is completely dry! In addition to the "heat stress," the water table must have dropped all the way to China! In addition to poor performance by the annuals, the drought produced tiny peaches and hardly any new leaf growth.

So how to account for fantastic roses, stems on the Chrysler Imperial have never been so long, and it has been a banner blueberry year. Somewhere Giant White Peaches were produced, (where does Castro find them) and now their season is ending, but the delicious taste (sliced with mangos) lingers on.

Only time will tell, but several of the peonies may have given up. Certainly the tree peonies, with three exceptions, have shown serious stress, and dropped most of their leaves by July. "Yae Zakura"

(See page 29)





**Dr. David Reath and Scott Reath at Reath's Nursery, Vulcan MI**



**Roy Klehm, Kit Klehm and John Elsley**

The Klehm Nursery of Charles Christian Klehm was a charter member of the American Peony Society when it began in 1903. Four generations later the Klehms are still growing peonies in a nursery, the latest, Roy Klehm of Song Sparrow Farm with Sarah Klehm, Kit Klehm and a staff of dedicated people at 13101 East Rye Road, Avalon, WI 53505. Over the years, individual members of the family have supported this organization in every capacity. Every program of the Society has always been of extreme interest. Exhibitions, displaying of peonies, nomenclature, Bulletins, hybridizing, peony auctions, advertising, publication of recent books, the business and financial status of the Society, in addition, helping with the physical work in arranging shows and giving hundreds of blooms for advertising to the Society. In every program, individual help of the Klehm family and that of the Nursery is present.





Klehm's Song Sparrow Farm, Avalon WI  
June 2002



Raspberry Sundae  
at Klehm's Song Sparrow Farm in 2002, Avalon WI  
A beautiful double, strong, cool weather plant—Greta Kessenich





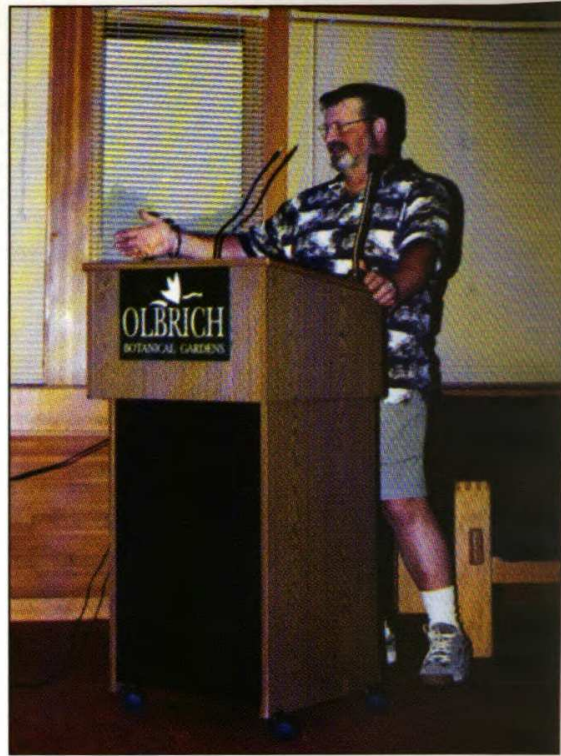
**Main garden of Steve Johnson, Minnesota**



**Tree Peony—Harris Olson, Birmingham, Michigan**  
**Parentage unknown. We think the seed came from “Rocks.”**  
**This plant had over 100 blooms this year 1998.**



**Bartzella**  
(Roger Anderson, Sr.)



**Roger Anderson, Sr.**  
Wisconsin



Sarah Klehm in the field of **Coral Charm**  
at Song Sparrow Farm, Avalon WI

(planted in front last fall in rich soil, with the cottage offering afternoon shade) still shows healthy leaves, "Waucedah Princess" has done well while showing some stress (even a few feet away from earlier afternoon shade) and "Age of Gold," acquired at a National Show Auction, is doing well. In nearly every instance the peonies with some afternoon shade have survived (leaf wise) better than those in full sun. That old saw, "location, location, location" proved so apt in this dry hot summer.

Luckily the Island is blessed with a well that taps into a fresh water River under the salt water Bay, and which runs constantly. While we've had serious electrical blackouts, our fresh water remains constant.

A favorite clump of "Ruffled Apricot" Day Lily, growing too close to "Cheddar Cheese" and "Pillow Talk," just drinking in the nutrients, was removed last weekend, and I have discovered a large (missed) Peach root from a tree long gone. It had been overlooked during the old tree removal. There were literally dozens of Ruffled Apricot fans to share with neighbors, and a good thing as the Day Lily had begun growing on top of itself, and should have been removed at the beginning of the season. Being so dry, they separated easily, and were given a good soak before transplanting. Grass weeds and succulent thorns are the real survivors, showing up, uninvited, with each soil enrichment.

Cricket Hill Garden's latest Chinese Tree and Herbaceous Peonies Catalogue arrived, with each group orchestrated alphabetically by color, and beautifully. The color combinations and petal forms are extraordinary, particularly (for me) the shades of Purple and Violet, take your breath away. A visit to their "Peony Heaven" Garden in Thomaston, Connecticut, in May and early June, reveals the beauty of those ardent flowers, or in the New York Botanical Garden's Permanent Collection.

And now for the "bounty" of Grapes, fall crop of Raspberries and Apples while looking forward to newcomers to the Island Garden (ordered for fall planting), and next season's spring surprises.

Vernon Kidd  
New York

---

For one to look at my peony bed now after a hot dry summer belies the lush beauty that these plants provided this spring. My peony bed consists of forty plants planted three feet away. Although my yard is large, it is wooded, affording little suitable space for peonies. I located my peony garden at the front corner which receives a half day of afternoon sun. These sun-loving plants seem tolerant of my less than ideal conditions; although, I am certain that they would grow more vigorously with more sun.

Due to limited space, I have tried to be very selective. The varieties represented include: one species (*P. tenuifolia*), eleven hybrids, two Itoh intersectional hybrids, and the rest lactifloras. At this point, if I see a new variety that I must have, it means having to remove one



of my current plants, a difficult decision which I try to avoid.

Depending upon weather conditions, performance can vary. This year, due to moderate late season temperatures, the late flowering varieties performed better than usual. Some of the most spectacular that come to mind are: **Old Faithful**, **Myrtle Gentry**, **Madylone**, **Ann Cousins**, **Mother's Choice**, **Nick Shaylor**, **Florence Nichols**, and **Mrs. Franklin D. Roosevelt**. **Myrtle Gentry** is more than just beautiful, it is the most fragrant of my peonies. **Madylone** is the largest, most perfectly formed blush rose form which I have seen. This is a variety which I had to have after admiring the magnificent specimens which Joe Glocka dependably produces exceptional quality fragrant white rose form blossoms on long stems — great for cutting but very poor in the garden. The pink, large petaled, rose form variety **Mrs. Franklin D. Roosevelt** is truly a classic beauty.

Two years ago, Peter Waltz sent a start of an unusual Saunders hybrid **P. broteroi** x **P. mlokosewitschii**. So far it is alive, but has not increased in size. I may move it to the front of the bed this fall to give it a little more sun.

Dale Baum,  
Anderson, IN



## Yellow Peonies

*by Harold Entsminger — Montana*

Yellow goes well with all peony colors. As cut flowers or grown in the garden yellow peonies, herbaceous or tree, seem to blend harmoniously, and do not clash with other peony colors. Even deep purple with the deep yellow of tree peonies go well together as in violas or Johnny-jump-ups of these colors. Coral and deep yellow, or light yellow, seem especially cheerie and bright together as in **High Noon** and **Coral Charm**. **Augelet** is an especially beautiful yellow tree peony because it holds itself upright on the bush and has beautiful, large red flares at its center bloom and often a matching red picotee edge like it had this June 2002. This year I bloomed two herbaceous yellow seedlings for the second year in a row. Both are deeper yellow than any herbaceous yellow I have seen. They are sister seedlings from my cross of Roy Pehrson's Best Yellow by Hollingsworth's Big Leaf Yellow #1947. I also got whites and pinks from this cross. The best of these two is of beautiful large form, single 7" to 8" flowers, and medium size leaves. I am naming it Sublime. The other is very deep yellow with smaller flowers and not as pleasing form. I have named it Mountain Mist. I will cross these trying to get the deepest Yellow (like Trolloides) on sublime. Both are pollen and pod fertile. I will also try **Yellow Crown**, which has proven to be both pollen and pod fertile with **Bartzella**. **Yellow Crown** seems to be more tree peony than herbaceous as in mild winters it does not die to the ground, but only to the snow level. It has already produced seeds and plants for me.



I see by the new registrations that **Bartzella** has also produced progeny. I can hardly wait for the both of them to bloom. 2003?

Fessera for an F1 lutea cross, produced good pollen for the first time ever this year and I have seeds with Hélène Martin. I have many crosses with Trolloides, which is very pod fertile, and also Lutea. Lutea is not supposed to be cold-hardy. I have one plant from Galen Burrell which dies to the ground each year and each spring shoots up four feet and blooms. It has survived -30° F and is a robust grower. Planted next to Hélène Martin, it brings out the white and red colors in Hélène. Imagine Yellow next to Blue or Orange Peonies. How lovely! I have several crosses from which I am hoping to get orange peonies.

One such plant is seven years old, an intersectional which looks mostly herbaceous, Tessera x Prairie Moon. It is 11" tall by 12" wide and seems to increase in top growth only every third year. It is in rather clay soil. If it does not bloom in 2003, I will dig it up and move it to some lighter more friable soil. Each year I keep thinking this will be the year it blooms. Yellow also goes well with Lavender. the huge blooms of Simane Chojuraku, Shimano-fui, and Kamata-fugi are accented by bright or light yellow peonies. Akashigata, Niigata Akashigata and Taishono-hikari are nicely harmonious with yellows. Pinks such as Shintenchii, Hanakisoi, and Shichifukujin wave and bow in the wind with the yellows looking their finest. And what better colors to set off the whites, Niigata Renkaku, Tsukisekai, and the huge fans of Kamikazes petals? And what beauties with the reds of Jetsu getsu-hishiki, Nissho and Kokamon. Most beautiful perhaps are the yellows with the Corals, Coral Charm, Coralie, Coral Supreme, Loreli, Pink Hawaiian Coral and Anderson's Coral hybrids, Shining, Stuning, Coral n' Gold, Carina, Carol, Lustrious, Cherry Ruffles, Peter Brand, Douglas Brand, a little theophany!! with Mlokoewitschii!



## REGISTRATIONS

**Polished Brass** (Gale Whitsett, Decatur, IL, August 5, 2002.) Seedling number 3-5. Parentage Serenade F3 seed from American Peony Society. First bloomed 1988. Clear pale bright yellow, single hybrid with sometimes plain to ruffled petals. Double. Reliable, has stamens, pollen and seeds. One bud per stem, excellent substance. Very light fragrance. Excellent stem strength. Seeds so heavy, stems hold the weight, hard to hold straight. 30-32" in height, early bloom, rigorous plant, good foliage. Size of bloom—about 6".

**Dawn Wings** (Gale Whitsett, Decatur, IL, August 5, 2002.) No seedling number. First bloomed 1985. White, pale pink flush hybrid. Parentage Serenade F2 seed and 1983 APS seed. First bloomed white, regarded pale pink. Stamens, pollen,

seeds faint fragrance. One bud per stem, reliable, excellent substance, good bloom. It takes about 3 years to see the correct bloom. A full double, large, fluffy. Stems strong, loaded with seed pods, difficult to hold straight. 30-35" in height. Early bloom, vigorous. Matured into beautiful blooming plant.

**Dear Emma** (Gale Whitsett, Decatur, IL, August 5, 2002) No seedling number. Parentage mixed Lot seed 1983 and APS. First bloomed 1987. Single hybrid, medium pink fades to white. Has stamens, pollen and seeds. Most reliable one or two buds per stem. Slight fragrance, extra heavy substance. Always plenty of bloom. 28-30" in height. Early bloom.

---

**Festive Fever** (J and D McFarlane, Waimate, New Zealand, July 8, 2002) Seedling number McF 118. Tree double hybrid. Parentage—Bill Seidl seeds. First bloomed 1994. Raspberry wine red. Flat form. Stamens, pollen, seeds, fragrant, reliable. Three buds per stem, good amount of bloom. Very good stem strength. Height approx. 2 meters. Late bloom, broad green leaves. Vigorous late bloom.

**Night Edition** (J and D McFarlane, Waimate, New Zealand, July 8, 2002) Seedling number McF 302. Tree, semi-double hybrid. Parentage—McFarlane seed, parents unknown. First bloomed 1997. Purple ball of gold stamens. Raised flat form, reliable, one bud per stem. Good stem strength, 1½ meters. Midseason bloom, vigorous. Medium green cut leaf.

**Georgies Baby** (J and D McFarlane, Waimate, New Zealand, July 8, 2002) Seedling number HQ. Parentage seed B. Seidl, USA. First bloomed 1994. Yellow/gold, red overlay. One bud per stem, reliable, seeds, pollen, and stamens. Good substance, approx. 1 meter, late bloom, vigorous green-gray leaf. Flowers are small. PHOTO

**Peter-James** (J and D McFarlane, Waimate, New Zealand, July 8, 2002) Seedling number McF 109, parentage unknown. First bloomed in 1994. Tree, semi-double hybrid. Lavender/dark purple flares. Stamens, pollen, seeds, good amount of bloom, reliable, one bud per stem. Lower growing tree peony with leaves of heavy substance, vigorous, midseason to late bloom. Height 1 meter. PHOTO

**Bloomin Artz** (J and D McFarlane, Waimate, New Zealand, July 8, 2002) Seedling number McF 121, parentage seed from John Simkins, Canada. First bloomed 1998. Semi-double tree, medium pink stamens, pollen and seeds. Flat form, reliable, one bud per stem, good substance, and stem strength. Approx.

1½ meters, early bloom, vigorous. Medium green foliage. Flower petals are shorter in the center giving the bloom a different form.

**'Halo in Pink'** (J and D McFarlane, Waimate, New Zealand, July 8, 2002) Seedling number McF 48. Parentage John Simkins seed, Canada. Double tree. First bloomed 1999. Pink, slightly flat 20 cm across, stamens, pollen and seeds. Reliable, one bud per stem, good substance, good amount of bloom. Good long stems, height 1½ meters. Midseason to late bloom. Vigorous, medium green foliage. A lovely tree peony, covered with large pink blooms.

**Almost Dark** (J and D McFarlane, Waimate, New Zealand, July 8, 2002) Seedling number McF 56, parentage seed from John Simkins, Canada. First bloomed in 1999. Velvety burgundy, semi-double hybrid, tree. Raised flat, stamens, pollen, seeds, one bud per stem, good substance, good amount of bloom. Most attractive tree peony with small leaves of light green. Flower sits well in the bush. Height 2 meters, midseason flowering. PHOTO

**Play With Fire** (J and D McFarlane, Waimate, New Zealand, July 8, 2002) Seedling number 29 Parentage. Own seed parent unknown. Year bloomed 1999. Semi-double hybrid tree peony. Bright wine red, darker center, flat form, stamens, pollen and seed. Reliability good, one bud per stem, good amount of bloom. Flower size 17-18 cm. Leaves are bold, medium green. Late season flowering, vigorous. PHOTO

**Auroras Blush** (J and D McFarlane, Waimate, New Zealand, July 8, 2002) Seedling number McFarlane 211. Double tree, parentage seed from John Simkins, Canada. First bloomed 1998. Very late bloom, pale pink, small purple flare. Loose form. No seeds, no pollen, no stamens, reliable, one bud per stem. Good amount of bloom. 1½ meters high, vigorous. Medium green foliage. PHOTO

**Regal Tapestry** (J and D McFarlane, Waimate, New Zealand, July 8, 2002) Seedling number McF 49, parentage seed, Seidl, USA. Double tree, first bloomed 1995. Cream rose overlay, small dark flares. Ball form, has seeds, pollen, stamens, good amount of bloom, with 3 buds per stem. A vigorous tree peony with flowers, tall plant 1½ to 2 meters. Late to midseason.

**Jewel of Spring** (J and D McFarlane, Waimate, New Zealand, July 8, 2002) No seedling number, parentage McFarlane seed. First bloomed 1998. Cream color semi-double flowers, with dark green foliage. Bowl shape, good substance,

has stamens, pollen and seeds, reliable with good amount of bloom. Good stems 1½ to 2 meters. Midseason bloom, vigorous. PHOTO

**Sine On Wine** (J and D McFarlane, Waimate, New Zealand, July 8, 2002) Seedling number McF 131. Parentage John Simkins, Canada. First bloomed 1998. Semi-double, burgundy flowers, raised flat form with stamens, seeds and pollen, reliable, one bud per stem. Good stem strength with light green foliage. 2 meters in height, blooms midseason.

**Border Patrol** (J and D McFarlane, Waimate, New Zealand, July 8, 2002) Seedling, number McF 59, parentage McFarlane seed, parentage unknown. Double tree, gold with rose edges. First bloomed 1999. Bowl form, with stamens pollen and seeds, 3 buds per stem, reliable, good amount of bloom. Full bush 2 meters in height with good stem strength, vigorous, late bloom. Broad dark green foliage. PHOTO

**Lemon Thrills** (J and D McFarlane, Waimate, New Zealand, July 8, 2002) Seedling number 62, parentage seed from William Seidl, USA. First bloomed 1995. This vigorous lemon flower tree peony shows its flower with small wine flares. Three buds per stem, reliable with good amount of bloom. Has stamens, pollen and seeds. A tall plant, 2 meters, blooms midseason. Strong stems with dark green large leaves. PHOTO

**Arts Desire** (J and D McFarlane, Waimate, New Zealand, July 8, 2002) Seedling number 108, parentage William Seidl, USA Rocki x \_\_\_\_\_. First bloomed in 1995. This pale lavender hybrid tree peony shows its dark flares and petals of frilly edges. It is reliable, one bud per stem. Seeds, pollen and stamens. Fair substance, average vigor, good stem strength, 1 meter high. Midseason bloom, round, small, light green leaves.

**Hot Gossip** (J and D McFarlane, Waimate, New Zealand, July 8, 2002) Seedling number McF 130, parentage own seed. First bloomed 1999. This semi-double tree peony hybrid. One bud per stem. Flower has hot pink raised form. Stamens, pollen and seeds. Good bloom, reliable plant, tall, 2 meters, good stems with medium green pointed leaves. Blooms midseason.

**Autumn Sunset** (J and D McFarlane, Waimate, New Zealand, July 8, 2002) Seedling number McF 003. Single tree hybrid. Parentage McFarlane seed parent unknown. First bloomed 1998. Two rows of petals, gold with red flushed center. Stamens, pollen and seeds. One bud per stem, reliable. Good



amount of bloom. Height 2 meters. Lovely bush with light green leaves. Late bloom, long stems.

**Jewelers Art** (J and D McFarlane, Waimate, New Zealand, July 8, 2002) Seedling number McF 58, parentage unknown. Double hybrid. First bloomed 1998. Pale cream/blush small feathery flares. Vigorous plant, color starting blush fading to cream. Stamens, pollen, seeds, reliable, good stem strength, height 1½ to 2 meters.

---

**Embargo** (Professor Harald Fawkner, Sweden, June 28, 2002) Seedling MI 1. Bright crimson advanced-generation hybrid single with green carpels and pink stigmata. Compactly arranged red and yellow stamens. Vigorous, upright, tall bush of a faintly bluish green. Early bloom.

**Gnitz** (Professor Harald Fawkner, Sweden, June 28, 2002) Seedling RA 233. Pink-violet lactiflora jap with rounded petals. Immaculately shaped pink-violet sphere of symmetrically arranged center staminodes. Pink-lilac flower color on each gold-tipped staminode is longitudinally marked by a thin white center line. Pale green carpels and white-pink stigmata. Midseason bloom.

**Sumvite** (Professor Harald Fawkner, Sweden, June 28, 2002) Seedling RA 55. Exceeding pale violet-pink advanced generation anemone to double hybrid, fading to pure white. Row of near-white petals flushed faintest violet encircles center of yellow staminodes transmutting into pure white petalodes. White carpels and pink stigmata. Excellent, healthy foliage. Early bloom.

---

**Smith Family Jewel** (Donald Smith, West Newton, MA, August 2002) Seedling number IC-95-17. Parentage Martha Washington x unregistered home grown lutea hybrid seedling. First year bloomed 2002. Double intersectional hybrid of cream flushed pink, rose form. Stamens, pollen and fragrant. No seeds. Reliable, one or two buds per stem. Very good substance. Excellent 28" stems with bloom. Early mid season to late midseason. Excellent foliage, highly disease resistant. Semi-double to double tree peony type flowers on herbaceous stems. Gorgeous, perfectly formed flowers open cream that is heavily flushed and edged in medium amethyst pink. As the flowers age, they become a smooth creamy white with a beautiful bluish lavender pink picotee. Both color phases are stunningly beautiful. Large flowers up to 7-8" in diameter. Many excellent lateral buds (2 per stem) that yield nearly perfect dou-

ble rosettes averaging 5" across, thus extending the blooming for up to 2½ weeks. Center contains a neat circle of stamen with pink and cream filaments and 3-4 pale green carpels with light pink stigma enclosed in a cream sheath. Abundant flowers are displayed on strong, upright to slightly arching stems well above and beyond the foliage making this a superb landscape variety. Plant is very hardy with stems entirely from below ground over-wintering buds. Excellent dark green foliage which lasts well into autumn. Mild but pleasant fragrance.

**Build Me Up Buttercup** (Donald Smith, West Newton, MA, August 2002) Seedling number 1C-94-02 parentage. *Lactiflora* var Martha Washington x Tree Peony Golden Era. First year bloomed 2000, double Intersectional hybrids, semi ball with stamens, pollen, no seeds. Good substance, reliable, 2-3 buds per stem, floriferous. Excellent stem strength, 30" high. Foliage, excellent, highly disease resistant. Double (30-50 petals) tree peony type flowers on herbaceous stems. Flowers are a clear bright yellow with large bright red flares that are prominent despite being partially hidden by the center petals. The large flowers have an attractive high built center petals, contains relatively few stamen and - 4 carpels that are light green with yellow stigma. Flowers are well presented on upright to slightly arching stems just above and beyond the foliage making this an excellent landscape variety. Plant is very hardy with stems entirely from below ground over-wintering buds. Excellent dark green foliage that lasts well into autumn. Mild but pleasant fragrance.

**Golden Delicious** (Donald Smith, West Newton, MA, August 2002) Seedling number 1C-94-16. Parentage *lactiflora* var. Martha Washington x Tree peony hybrid Golden Era. First year bloomed 2001. Double yellow flushed pink rose form. Intersectional, stamens, pollen, no seeds 1-2 buds per stem. Average amount of bloom. Excellent stem strength, 28" height. Late season of bloom. Excellent foliage, disease resistant. Semi-double to double (roughly 32 petals) tree peony type flowers on herbaceous stems. Flowers are a medium yellow flushed with light pink which remains on the outer most petals as the flowers mature. Flowers are up to 6" in diameter and have no flares. Large number of lateral buds gives extended period of bloom for up to 2½ weeks. Center contains a circle of stamen with the yellow filament surrounding 3 carpels that are pale green with yellow stigma. Flowers are displayed on upright to slightly arching stems just above and beyond the foliage making this an excellent landscape variety. Plant is very hardy (Zone 5B) with stems entirely from below ground over-wintering buds. Excellent dark green foliage that lasts well and turns a pretty red color in the fall. Mild but pleasant fragrance.

**Yankee Doodle Dandy** (Donald Smith, West Newton, MA, August 2002) Seedling number 1C-93-14R. Parentage Lactiflora var. Martha Washington x Golden Era. First bloomed 2000. Dark pink, rose form, stamens, pollen, no seeds. 2-3 buds per stem reliable, very good substance, floriferous. Excellent stem strength, 36" height. Midseason bloom, excellent foliage, disease resistant. Semi-double to occasionally double tree peony type flowers on herbaceous stems. Flowers are a deep attractive pink with cream undertones that fade slightly as the flowers mature, but remain attractive to petal drop. Flowers up to 6" in diameter have large, very attractive dark plum colored fares. Large number of lateral buds (1-2 per stem) gives long period of bloom of up to 2½ weeks. Attractive center contains a tight circle of stamen with pink filaments surrounding 4-5 carpels that are a pale green with dark pink stigmata enclosed by a cream colored sheath. Quite floriferous with flowers displayed on excellent upright to slightly arching stems just above and beyond the foliage thus making this a superb landscape variety. Plant is very hardy with stems entirely from below ground over-wintering buds. Excellent dark green foliage which lasts well into autumn. Nice, pleasant fragrance.

**Magical Mystery Tour** (Donald Smith, West Newton, MA, August 2002) Seedling number 1C-95-21R. Parentage Lactiflora var. Martha Washington x Golden Era. First bloomed 2000. Intersectional double, creamed flushed pink, rose form, stamens, pollen, no seeds. Very good substance. 1-2 buds per stem, reliable very good substance. Average amount of bloom. Excellent stem strength. 28" height. Blooms midseason, foliage is disease resistant, excellent vigor. Semi-double to double tree peony flowers on herbaceous stems. Gorgeous, perfectly formed flowers open cream that is heavily flushed and edged in medium amethyst pink. As the flowers age, they become a smooth creamy white with a beautiful bluish lavender pink picotee. Both color phases are stunningly beautiful. Large flowers up to 6-7" in diameter. Many excellent lateral buds (roughly 2 per stem) that yield nearly perfect double rosettes averaging 5" across, thus extending the blooming for up to 2½ weeks. Center contains a neat circle of stamen with pink and cream filaments and 3-4 pale green carpels with light pink stigma enclosed in a cream sheath. Abundant flowers are displayed on strong, upright to slightly arching stems just above and beyond the foliage making this a superb landscape variety. Plant is very hardy with stems entirely from below ground over-wintering buds. Excellent dark green foliage which last well into autumn. Mild but pleasant fragrance.

**Strawberry Blonde** (Donald Smith West Newton MA Aug 2002) Seedling number 1c-94-13. Parentage Lactiflora var Martha Washington Golden Era-First year bloomed 2000. Intersectional double of yellow flashed pink. Rose form, Stamen, pollen and no seeds, fragrant average amount of bloom 1-2 buds per stem, reliable. Excellent stem strength, approx 28" height, late season, foliage disease resistant, vigorous plant. Semi-double (16-24 petals) tree peony type flowers on herbaceous stems. Flowers are a medium yellow flushed with light pink which remains on the outer most petals as the flowers mature. Flowers are up to 6" in diameter and have no flares. Large number of lateral buds gives extended period of bloom for up to 2 ? weeks. Center contains a circle of stamen with yellow filaments surrounding 3 carpels that are pale green with yellow stigma. Flowers are displayed on upright to slightly arching stems just above and beyond the foliage making this an excellent landscape variety. Plant is very hardy (Zone 5B) with stems entirely from below ground over-wintering buds. Excellent dark green foliage that lasts well and turns a pretty red color in the fall. Mild but pleasant fragrance.

**Reverse Magic** (Donald Smith West Newton, MA Aug 2002) Seedling number RC 95-01. Parentage-reverse cross, intersectional tree peony age of Gold x Lactiflora mixture from Martha Washington. First year bloomed 2000. Double intersectional, cream fleshed light pink, rose form, stamens, pollen, no seeds. 1-2 buds per stem, fragrant, average amount of bloom- midseason, Good stems 30" height foliage good thus July, but sometimes spotted and ragged by late summer. An extremely rare reverse cross intersectional hybrid. Semi-double – double tree peony type flowers on herbaceous stems. Exquisite flowers open light yellow heavily flushed with pink, then slowly change as the flowers mature to a lovely smooth cream delicately suffused and edged with light pink. Large dark red flares highlight an attractive center containing a tight circle of yellow stamen and 3-4 pale green carpels capped with cream stigma. Large flowers up to 7" in diameter. Average number of lateral buds. Flowers are held on strong stems well above and beyond the foliage. Plant is very hardy with stems entirely from below ground over-wintering buds. Dark green attractive foliage that becomes ragged and unattractive by late summer and this seriously detracts from its value as a landscape plant. Registered primarily for its uniqueness as a reciprocal cross hybrid and for its extremely attractive flowers. Mild pleasant fragrance.

**Maximus Glorious** (Donald Smith, West Newton, MA. Aug 2002) Seedling number. 1C-93-21. Parentage Lactiflora, var Martha Washington x Golden Era. Double, intersectional



hybrid, first bloomed 2000. Rose form, yellow stamens, pollen, no suds, able 2-3 buds per stems, fragrant, floriferous, excellent stem strength 30-32" height, blooms midsummer, disease resistant foliage. Full double (30-50 petals) tree peony type flowers on herbaceous stems. Flowers are lightly flushed pink when first open, but soon become a clear bright yellow with large bright red flares that are quite prominent despite the rather full center. Very large flowers, with some exceeding 8" in diameter. Many large lateral buds (usually 2 per stem) that produce excellent double flowers averaging 6-8" across that are generally more double than the terminal flowers. Quite floriferous with a blooming period extending for about 2 ? weeks. The attractive center contains a sparse ring of stamen and 5-8 light green carpels with cream stigma that are surrounded by a cream colored sheath. Flowers are displayed on upright to slightly arching stems just above and beyond the foliage making this an excellent landscape variety. Plant is very hardy with stems entirely from below ground over-wintering buds (Zone 5b). Excellent dark green foliage which lasts well into autumn. Mild but very pleasant fragrance.

**Singing in the Rain** (Donald Smith W.. Newton MA. Aug 2002) Seedling number 1C-93-06. Parentage, Lactiflora var. Martha Washington x Golden Eras. First year bloomed 2000 Intersectional double yellow blend, Rose form, stamens and pollen, no seeds, fragrant, reliable, 3-4 buds per stem, good substance, floriferous, stem strength good-approx 36" early-late-one of the first to bloom. Is among the last to go. Disease resistant with excellent foliage. Semi-double tree peony type flowers on herbaceous stems. Opening buds are pink. Flowers are yellow heavily flushed and suffused with pink when first open. From a distance, newly open flowers appear light orange. Mature flowers are a clear deep yellow with no flares. Occasional petals have dark pink streaks. Combination of the two color stages gives the overall plant a very pretty two-tone effect. Flowers measure up to 6" in diameter. An attractive center contains a tight circle of yellow stamen and 3-4 light green carpels with yellow stigma. Extremely floriferous due to several (2-3) side buds per stem. Side bud flowers are of excellent quality and nearly as large as the terminal flowers. Massive numbers of flowers are displayed on upright to slightly arching stems just above and beyond the foliage, which literally cover the entire plant thus making this a superior landscape variety. Flowers are virtually unaffected by heavy rain, thus the name. Plant is very hardy with stems entirely from below ground over-wintering buds. Plant has a perfectly symmetric mound shape with a height of 36-40". Excellent dark green tree peony type foliage that lasts well into autumn. Mild but very pleasant fragrance.

**Scrumdiddleumptious** (Donald Smith, W. Newton MA 2002) Parentage Lactiflora var Martha Washington x Golden Era Double intersectional-seedling number 1C-94-03. Cream overlaid light pink, rose form. Stamens, pollen, no seeds. 2-3 buds per stem. Reliable, fragrant, very floriferous. Stems excellent, 28" height, blooms midseason, foliage-disease resistant. Double (30-50 petals) tree peony type flowers on herbaceous stems. Flowers are a lovely light cream overlaid and edged with light pink. Darker pink flares are mostly hidden by the petals and are therefore, generally not prominent. Large flowers up to 6" in diameter. Many excellent lateral buds (1-2 per stem) that produce very double (high built) flowers averaging 5" across, thus extending the blooming for up to 2 ? weeks. Center contains a few stamen and generally 4-5 carpels that are light green with yellow stigma. Very floriferous with flowers well displayed on upright to slightly arching stems just above and beyond the foliage making this an excellent landscape variety. Plant is very hardy with stems entirely from below ground over-wintering buds. Excellent dark green foliage that lasts well into autumn. Mild but pleasant fragrance.

**Smith Family Yellow** (Donald Smith West Newton MA Aug 2002) Seedling number 1c-94-27T. Parentage lactiflora var Martha Washington x Golden Era. Intersectional double yellow, rose form stamens. Pollen and no seeds. First bloomed 2002. Floriferous. Reliable, 2-3 buds per stem, fragrant, very good substance. 28" height with excellent stem strength, blooms mid-season, disease resistant foliage, vigorous plant Semi-double to double (30-50 petals) tree peony type flowers on herbaceous stems. Flowers are a clear deep yellow with small red flares that are not especially prominent. Large flowers up to 8" in diameter. Many large side buds (1-2 per stem) that yield nearly perfect double rosette flowers averaging 5" across, thus extending the blooming for up to 2 ? weeks. Center contains a dense ring of stamen and 4 carpels that are light green with yellow stigma. Flowers are beautifully displayed on upright to slightly arching stems just above and beyond the foliage making this an excellent landscape variety. Plant is very hardy with stems entirely from below ground over-wintering buds. Excellent dark green tree peony type foliage that lasts well into autumn. Mild but pleasant fragrance.

**Yellow Doodle Dandy** (Donald Smith West Newton MA 2002) Seedling number 1c-95-02. Parentage Martha Washington, unregistered home grown lutea hybrid seedling. First year bloomed 2002- Double intersectional hybrid. Yellow, rose form stamens, pollen, no seeds. Very good substance average amount of bloom. 1-2 buds per stem, reliable, fragrant,

28 inches high, excellent stem strength, blooms midseason, foliage disease resistant vigorous plants. Semi-double to double (30-50 petals) tree peony type flowers on herbaceous stems. Flowers are a clear deep yellow with just a hint of green and no flares. Large flowers measure up to 8" in diameter. A loose circle of yellow stamen surround 4-5 pale green carpels with creamy yellow stigma. Flowers are displayed on upright to slightly arching stems just above and beyond the foliage making this an excellent landscape variety. Plant is very hardy with stems entirely from below ground over-wintering buds. Excellent dark green foliage that lasts well into autumn. Mild but pleasant fragrance.

For these new yellow peonies, contact Donald Smith, 46 Exetic St. West Newton MA 02465

**NOTE:**

In Bulletin #320 registration "Mahaska" is faulty. This name has already been taken by Willis J. Smith. I wish to re-register this cultivar under the new name **Nilitz**. Registered by Prof. H.W. Fawkner, Sweden.

**INTERSECTIONAL (ITOH) HYBRID PEONIES**

*Large Selection (16 varieties)  
Quality Plants*

***Have you considered purchasing varieties from New Zealand (including Bartzella, Lemon Dream, Julia Rose, Scarlet Heaven, Hillary etc.) ?! We also sell a wide selection of herbaceous peonies.***

Send US\$2.00 for our colored photo brochures & catalog to:

**SIMMONS PAEONIES**

389 Buchanans Road  
RD6, Christchurch 8004  
NEW ZEALAND

Phone: +64 3 342 1160

Fax: +64 3 342 1162

email: p.e.simmons@clear.net.nz

**ADVANCED GENERATION HYBRID TREE PEONIES  
FROM WORKS OF BILL SEIDL AND OTHERS  
ARE ON DISPLAY ONLINE**

To view 200 full screen size photos, please visit our website:

<http://www.peonygarden.com.au>

For a CD-ROM, please send US\$3 to

**PEONY GARDEN**

283 Little Lonsdale Street, Melbourne, Australia. 3000.

Mobile Phone: (613) 0417 015 520

E-mail: [peonygarden@hotmail.com](mailto:peonygarden@hotmail.com)

peony garden.com

Probably the largest selection of peonies for sale  
almost 1000 varieties available the internet  
[www. peony garden .com](http://www.peonygarden.com)

PRINT YOUR OWN PEONY GARDEN GUESS BOOK  
1-613-441-1111

The Society needs seed exchange. Please  
Avenue, St. Paul, MN  
provide about the parents of the seedlings.  
We are unable to provide seedlings  
available this fall. If you would like to provide seedlings  
would like (i.e. from tree peonies)  
for \$2.00 if you are in the U.S. or Canada.



*Think Spring! Plant Daffodils!*

## *Daffodil Culture*

*By*

*Howard J. Merrill*

*\$7.95 postpaid USA*

*\$10.00 postpaid Foreign*

*American Daffodil Society*

*4126 Winfield Road*

*Columbus, Ohio 43220-4606*

## **PEONIES 1986 - 1996**

Peonies introduced and registered in the last ten years have been added to a five decades' effort by contemporary hybridizers. All are listed by name with names of their originators and year of registrations. New peony creations now cover an expanded spectrum of colors. Send order to

**AMERICAN PEONY SOCIETY**

50 Interlachen Rd., Hopkins, MN 55343

**ADVANCED GENERATION HYBRID TREE PEONIES  
FROM WORKS OF BILL SEIDL AND OTHERS  
ARE ON DISPLAY ONLINE**

To view 200 full screen size photos, please visit our website:

<http://www.peonygarden.com.au>

For a CD-ROM, please send US\$3 to

**PEONY GARDEN**

283 Little Lonsdale Street, Melbourne, Australia. 3000.

Mobile Phone: (613) 0417 015 520

E-mail: [peonygarden@hotmail.com](mailto:peonygarden@hotmail.com)

**peonygarden.com**

Probably the largest selection of peonies for sale anywhere  
almost 1000 varieties all on the internet at:

[www. peonygarden.com](http://www.peonygarden.com)

**PRINT YOUR OWN CATALOGUE (*No mail*)**

**1-613-398-7650**

**SEED, SEED, SEED**

The Society needs seeds from its members in order to have a successful seed exchange. Please send seeds this fall to Kent Crossley, 1245 Delaware Avenue, St. Paul, MN 55118. Label with as much information as you can provide about the parents or the type of peony that was the source of the seeds.

We are unable to provide information at this time about the seeds that will be available this fall. If you would like seeds, please write and indicate the type of seeds you would like (i.e. from tree peonies, lactiflora or hybrid crosses). Please enclose a check for \$2.00 if you are in the U.S. or Canada or \$4.00 if you live outside North America.

*Think Spring! Plant Daffodils!*

## *Daffodil Culture*

*By*

*Howard J. Merrill*

*\$7.95 postpaid USA*

*\$10.00 postpaid Foreign*

*American Daffodil Society*

*4126 Winfield Road*

*Columbus, Ohio 43220-4606*

**10  
YEAR  
UPDATE**

## **PEONIES 1986 - 1996**

- Herbaceous peonies
- Tree peonies
- Hybrid peonies
- All registered varieties
- Spiral bound
- Full-color cover

157  
pages **\$15**

Peonies introduced and registered in the last ten years have been added to a five decades' effort by contemporary hybridizers. All are listed by name with names of their originators and year of registrations. New peony creations now cover an expanded spectrum of colors. Send order to

**AMERICAN PEONY SOCIETY**

250 Interlachen Rd., Hopkins, MN 55343



# The Best Chinese Tree Peonies and Herbaceous Peonies

- Over 300 Varieties in our Garden
- All Plants Guaranteed to Grow
- Finest Quality
- Paeonia Rockii Cultivars
- Retail/Wholesale

*Visit us online for one of the best gardening web site!*

## Golden Port International

2255 Cedars Road  
Lawrenceville, GA 30043  
Toll Free 1-877-PEONIES (1-877-736-6437)  
770-513-1013 Fax 770-277-9510  
[www.goldenport.com](http://www.goldenport.com)





# *Beautiful Japanese and Chinese Tree Peonies*

3 Years Old & Older.

Wide variety of Exotic, Inexpensive Tree  
Peonies Available.

\$3/Catalog.

## **Smirnow's Son's Peonies**

168 Maple Hill Road

Huntington, NY 11743

USA

Phone (631) 421-0836

Fax (631) 421-0818

E-mail [smirnowb@ix.netcom.com](mailto:smirnowb@ix.netcom.com)

LOOKING TO PURCHASE COLLECTIONS  
OF TREE PEONIES.

CALL 631-421-0836 OR WRITE.

# PICTURE PERFECT PEONIES



We offer generous clumps of strong, healthy, viable peonies which are the result of professional production procedures, proper nutrients, moisture and hot, humid conditions. Named varieties are available. Call for our complete list.

Visit our regularly updated 'Peony Page' at [www.shermannursery.com](http://www.shermannursery.com) for peony information, descriptions and availability.



Sherman Nursery Company . P.O. Box 579 . Charles City, Iowa 50616-0579  
1-800-747-5980 . Fax 641-228-7569 . Email: [sales@shermannursery.com](mailto:sales@shermannursery.com)  
**WE OFFER QUALITY BARERoot AND CONTAINER NURSERY STOCK**

*SPECIALIZING IN*

## **OWN ROOT TREE PEONIES**

U.S. Representative for **HEZE EAST FLOWERS CO., LTD.**



*Brothers*

**Herbs & Peonies**

P.O. Box 1370

Sherwood, OR U.S.A. 97140

Catalog \$2.00

**RICHARD W. ROGERS**

Ph. (503) 625-7548 • Fax (503) 625-1667

**1st Edition  
SOLD OUT!**  
**2nd Printing**

# THE PEONIES

BY

**JOHN C. WISTER, EDITOR**

Prepared under his editorship by M. D. Bigger, M. C. Karrels, W. H. Krekler, G. W. Peyton, P.P. Pirone, Silvia Saunders, G. S. Wister, H.E. Wolfe

## TYPICAL CHAPTER TREATMENTS INCLUDE:

- **SPECIES**  
descriptions by famous authority Col. Frederick Stern
- **HISTORY**  
of hybrid varieties
- **DISEASE CONTROL**  
and proper plant husbandry
- **TREE PEONIES**  
and propagation through grafting of scions to herbaceous root segments
- **LISTING OF VARIETIES**  
favored throughout the decades
- **LOCATION**  
of peonies in public and private gardens
- **APS HISTORY**  
as it nears a 100th anniversary

**HARD COVER  
EDITION**  
**225 Pages**  
**6 1/2" x 9"**  
**Postpaid, just—  
\$22.50**

PEONY GARDENERS will welcome this classic work just reprinted, "THE PEONIES" by J. C. Wister

THE PEONIES treats every facet of peony culture from flashbacks through a 2,000 year herbaceous and tree peony culture to modern propagation and hybridizing techniques. It also includes hundreds of listings for recommended varieties plus thumbnail descriptions of old standbys—a truly remarkable work highlighting a remarkable flower.

Send your order to:

**AMERICAN  
PEONY SOCIETY**  
250 Interlachen Road  
Hopkins, MN 55343





*Call or e-mail us  
to request a copy  
of our 100 page  
full color catalog.*

### *Featuring*

- Klehm Estate Peonies
- American Hybrid Tree Peonies
- Roy Klehm's New Peony Hybrids
- Newest Hosta Hybrids
- Roy Klehm & Brother Charles' Daylilies

13101 East Rye Road  
Avalon, WI 53505  
info@songsparrow.com    www.songsparrow.com



*Order Toll Free*

**1-800-553-3715**

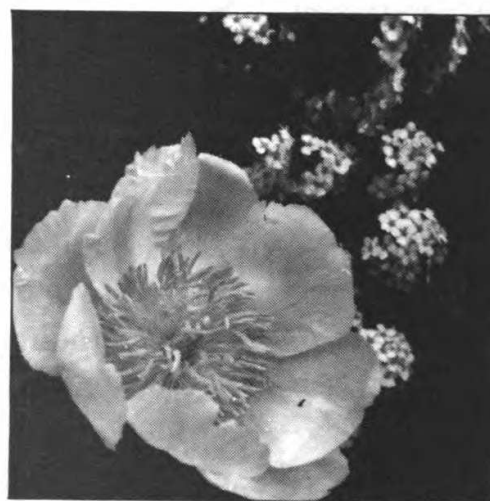
*Email us at [sparrow@JVLNET.com](mailto:sparrow@JVLNET.com)*

*Adelman  
Peony  
Gardens*

5690 Brooklake Road NE  
PO Box 9193, Salem, OR 97305  
503-393-6185

nail us at [info@peonyparadise.com](mailto:info@peonyparadise.com)  
[www.peonyparadise.com](http://www.peonyparadise.com)

Color Catalog on website  
Free descriptive catalog by mail  
Over 100 varieties offered for 2002



## PEONIES

## **SEVALD NURSERY**

Dept. 11  
4937 3rd Av. So.  
Mpls., MN 55409

**Color Catalog \$1.00**  
(Refund with order)



## THE NEW PEONY FARM

Superb Quality Herbaceous Peonies  
Our Catalog is free upon request.

Box 18235 • St. Paul, Minnesota 55118

## Hollingsworth Nursery

*Breeder and Propagator of Fine Peonies*

Voice (660) 562-3010

FAX (660) 582-8688

e-mail: [hpeonies@asde.net](mailto:hpeonies@asde.net)

Internet: [www.hollingsworthpeonies.com](http://www.hollingsworthpeonies.com)

## TOMORROW'S TREASURES

**Gorgeous Tree Peonies**  
**with a Flare**

Write for free catalog:  
**PO Box 434**  
**BLACK EAGLE, MT**  
**59414**



And Herbaceous

## HERBACEOUS PEONIES & TREE PEONIES

Propagated and grown in Upper Michigan's North Country  
Your assurance of quality, hardiness and vigor.

Send \$3.00 for our **color** catalog.

**REATH'S NURSERY**  
**N-195 COUNTY RD 577**  
**VULCAN, MICHIGAN 49892**  
**(906) 563-9777**

**email: reathnur@up.net**  
**reathsnursery.com**

## PEONIES — HEMEROCALLIS

**Send \$3.00 for our 115th Anniversary Catalog.**

Over 1,200 varieties to choose from in full color.

Catalog deductible from first catalog order.

Call or write for wholesale listing.

**GILBERT H. WILD AND SON, INC.**

Sarcoxie, Missouri 64862

**Phone (417) 548-3514**

**Fax (417) 548-6831**

**APS 12/02**

## Quality Herbaceous Peonies

Grown in rich Iowa soil. Free list of varieties.

Wholesale only.

### **A-1 NURSERY**

**2842 Fremont Ave. • Shenandoah, IA 51601**

**712 / 534-2595 Fax: 801 / 740-3838**

**rogerj@coin.heartland.net**

*Need spring color in your garden?*

Join **THE AMERICAN DAFFODIL SOCIETY** and learn  
about the great variety available in modern daffodils.

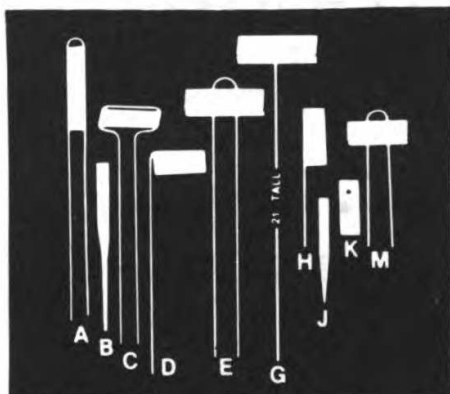
Membership includes *The Daffodil Journal*, issued quarterly.

Just released on CD ROM: The Illustrated Data Bank,  
a listing of over 14,000 daffodils, with over 2500 photos; \$149.95.

Send for brochure.

**Membership, \$20 per year; 4126 Winfield Rd., Columbus, OH 43220**

# The Permanent Metal Label



A—Hairpin Style Markers	100 / \$29.20
B—Plant or Shrub Labels	100 / \$11.30
C—Cap Style Markers	100 / \$24.50
D—Swinging Style Markers	100 / \$22.40
E—Rose Markers	100 / \$27.20
F—Tall Display Markers	100 / \$34.15
G—Tall Single Staff Markers	100 / \$27.80
H—Flag Style Markers	100 / \$23.15
J—Small Plant Labels	100 / \$11.20
K—Tie-On Labels	100 / \$17.10
M—Miniature Markers	100 / \$20.15

## INTRODUCTORY OFFER

1 EACH: A, B, C, D, E, H, J and K  
With Waterproof Crayon, Only \$4.25

## Paw Paw Everlast Label Company

P.O. BOX 93-AP

PAW PAW, MICHIGAN 49079-0093

QUANTITY PRICES AVAILABLE

PRICES INCLUDE PREPAID POSTAGE

OFFICIAL AMERICAN PEONY SOCIETY

## Peony Handbook

**Herbaceous Peonies  
and  
Tree Peony Culture**

COVERING SUCH SUBJECTS AS:

- Peony types
- Peony propagation
- Successful root dividing and grafting
- Proper planting
- How to fertilize
- Disease control
- How to raise exhibition blooms

**Price per copy \$5.00**

**American Peony Society  
250 Interlachen Rd., Hopkins, MN 55343**

## PEONIES 1976 - 1986

Compiled and edited by Greta M. Kessenich in cooperation with the nomenclature committee of the American Peony Society.

**Second Edition  
10 - Year  
Update**

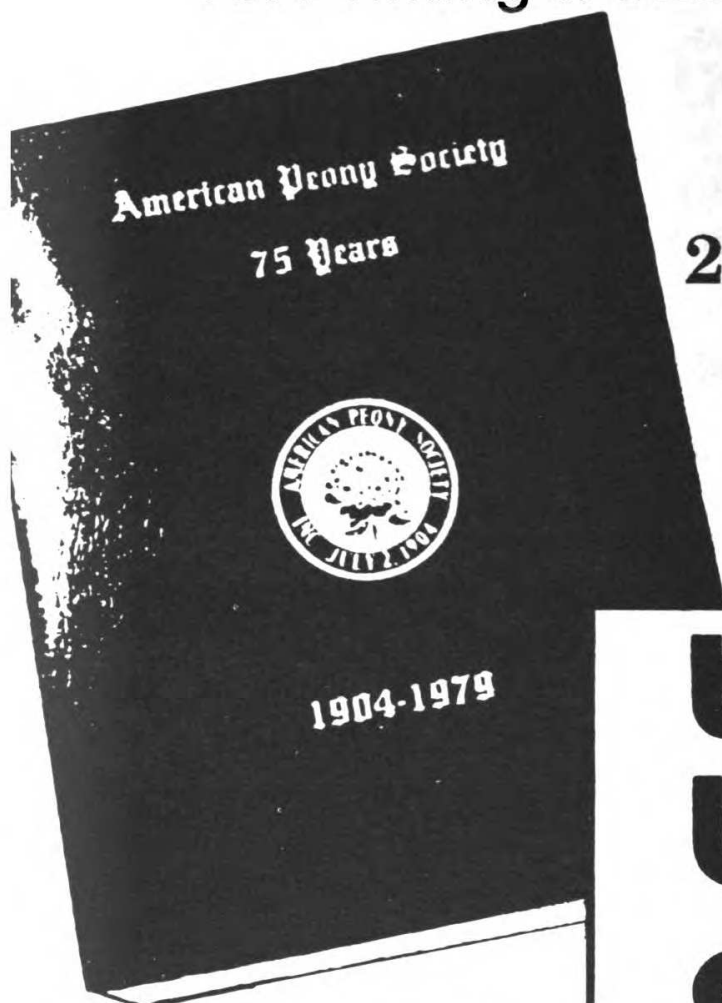
**Registered Peonies  
and Tree Peonies**

**Postpaid \$10**

**American Peony Society  
250 Interlachen Road  
Hopkins, MN 55343**



1st Printing a SELL-OUT!



... Now —  
2nd Printing

**the  
best  
of 75  
years**

Compiled and edited  
by Greta M. Kessenich.  
8 1/2 x 11, 232 pages, and still  
priced at just ... \$15.

here but through the efforts of  
the APS can you avail yourself of  
EVERYTHING there is to know  
about PEONIES . . . culture,  
history, exhibitions, ratings,  
terminology and propagation  
techniques all excerpted from APS  
PUBLICATIONS since 1904! Articles by

such peony "greats" as Saunders,  
Auten, Peyton, Wister, and Gayle  
are joined by contemporaries such  
as Krekler, Wild, Hollingsworth,  
Lienau, Karrels and scores of  
others. Get your copy of "The Best  
Of 75 Years"—there's nothing in  
the world like it!

**AMERICAN PEONY SOCIETY 5865**  
250 Interlachen Road, Hopkins, MN 55343





FIRST EDITION . . . .

# PEONIES

A HISTORY OF PEONIES AND THEIR ORIGINATIONS

Compiled and edited by Greta M. Kessenich in cooperation with the  
nomenclature committee of the American Peony Society

## In Three Parts

### 1. VARIETY CHECKLIST

Based on a list compiled and edited  
Mr. & Mrs. Byron Gist, completed in 195  
and kept on file at Kingwood Center, Mar  
field, Ohio.

### 2. REGISTERED PEONIES

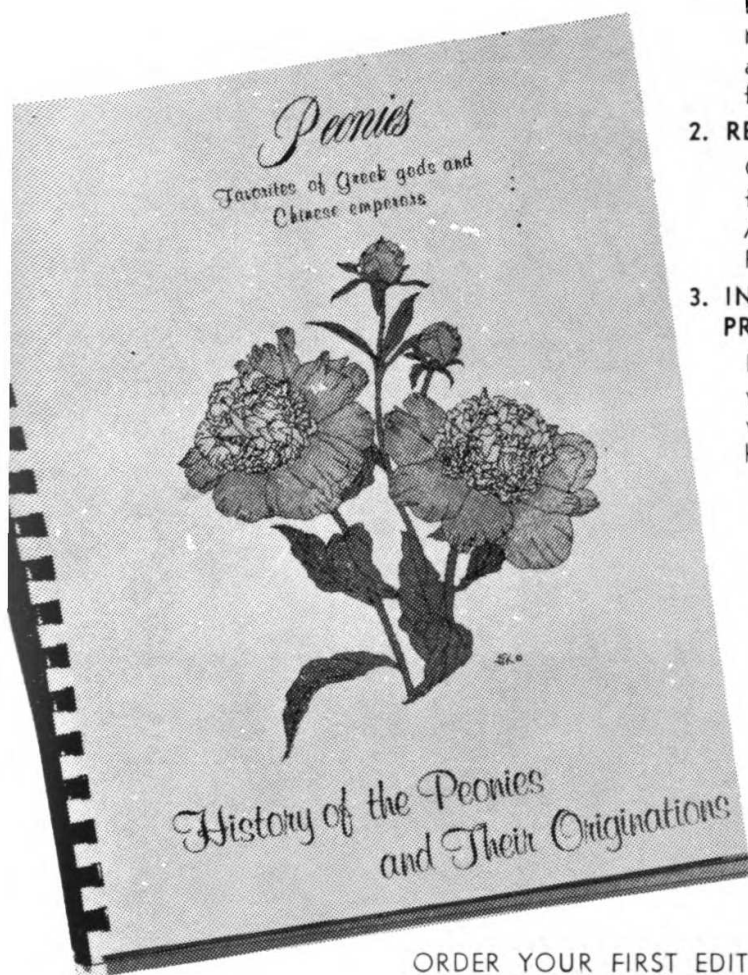
Compiled and edited by Greta M. Kesseni  
from bulletins of the American Peony Socie  
All varieties registered with the Americ  
Peony Society are listed.

### 3. INTRODUCERS OF PEONIES AND THEIR PRODUCTIONS

Peony varieties listed by growers and c  
velopers with emphasis on information p  
vided by George W. Peyton during the ye  
he was secretary and editor.

### 5,000 INDIVIDUAL ENTRIES

Peony growers who have had to rely  
fragmented sources for tracking do  
peony varieties and their origins can n  
avail themselves of this magnificent w  
—a spiral bound, 9x12 inch book wh  
lists and presents a capsule history of  
varieties in commerce. It is the result o  
monumental research, compilation a  
editing effort by Greta Kessenich and  
nomenclature committee consisting  
three American Peony Society past pr  
dents: Roy G. Klehm, Marvin C. Karn  
and Clarence O. Lienau.



## ORDER YOUR FIRST EDITION COPY NOW!

You'll enjoy this fine companion to your interest in peonies and will re  
to it many times during the course of your peony gardening activ  
It bears a beautiful color cover, contains 162 pages and is printed  
fine stock. Cover and all artwork contained inside is the work of a  
Joseph F. Kuczek. Price per copy \$20



American Peony Society  
250 Interlachen Road  
Hopkins, Minnesota 55343



Please send me \_\_\_\_\_ copies of 'The History of Peonies and  
Their Originations' at \$20.00 per copy for which I enclose \$ \_\_\_\_\_

Name \_\_\_\_\_

Address \_\_\_\_\_

City \_\_\_\_\_ State \_\_\_\_\_ Zip \_\_\_\_\_



Garden of Dale Baum  
Anderson, Indiana



Lemon Chiffon  
(Dr. David Reath, 1981)  
Photo by Steve Johnson

7650 ==